

EasyScan

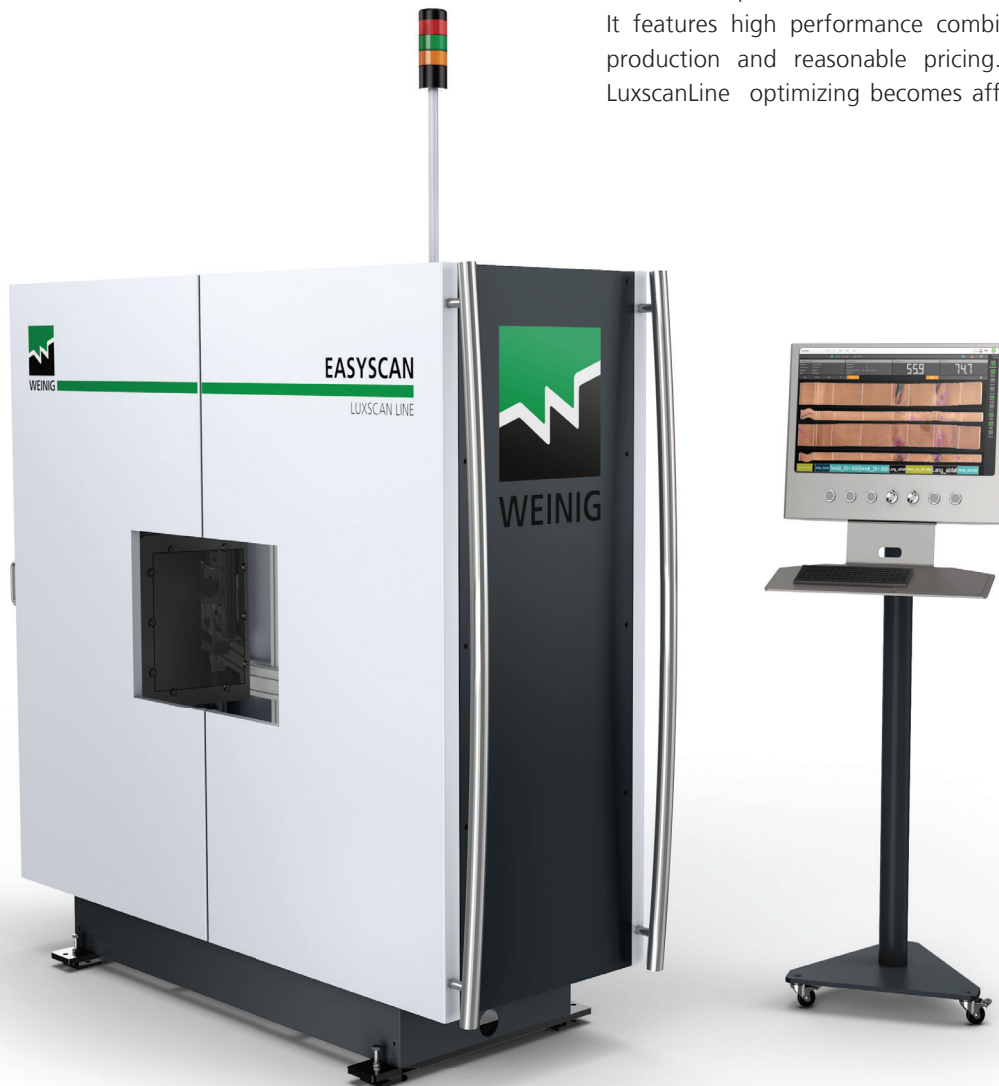
The simplest way of optimizing



WEINIG

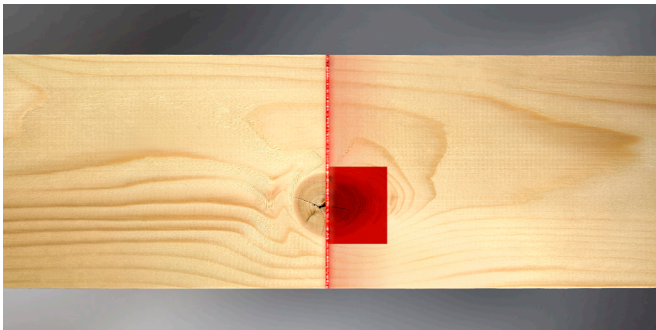
The most economical optimizing solution

The EasyScan LuxscanLine series sets a new benchmark for economical scanning. This innovative scanner has been developed from the well known CombiScan Series. It features high performance combined with economical production and reasonable pricing. With the EasyScan LuxscanLine optimizing becomes affordable for everyone.

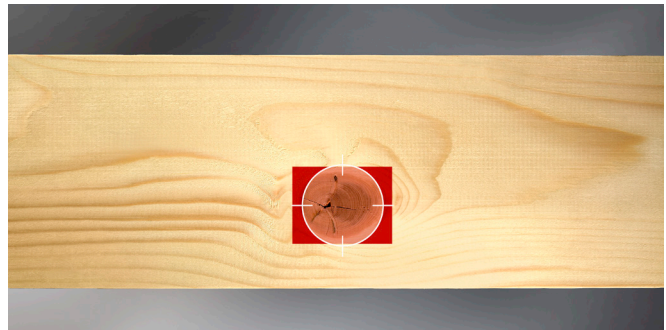


Optimizing – the one, two, three

Step 1. LuxscanLine scanners use multiple sensor technology such as laser cameras, colour cameras etc. Suitable for many applications your WEINIG expert will advise on the appropriate scanner based on the wood species, surface quality and required performance. Our goal is to achieve the best possible information quality for each customers' application.

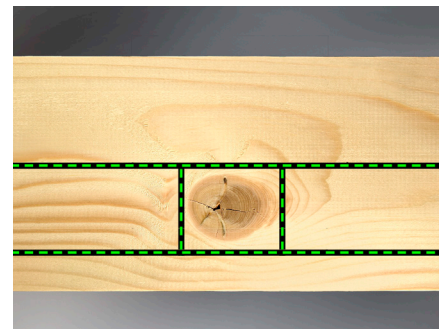
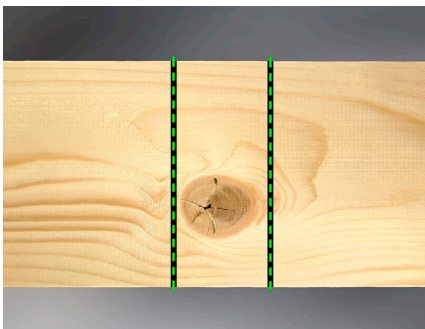


Step 2. In the next step, image processing, the highly developed LuxscanLine OptiCore software takes over. It can see and identify different defects as well as colour variations on the board. Quality data from the multiple sensors allows for optimal data processing and defect identification.



Step 3. The optimization from the powerful OptiCore software provides the best solution for cross-cutting, ripping* or sorting. It takes into account various customer requirements and quality demands. Based on the exact characteristics identified during image processing, the board is optimized according to

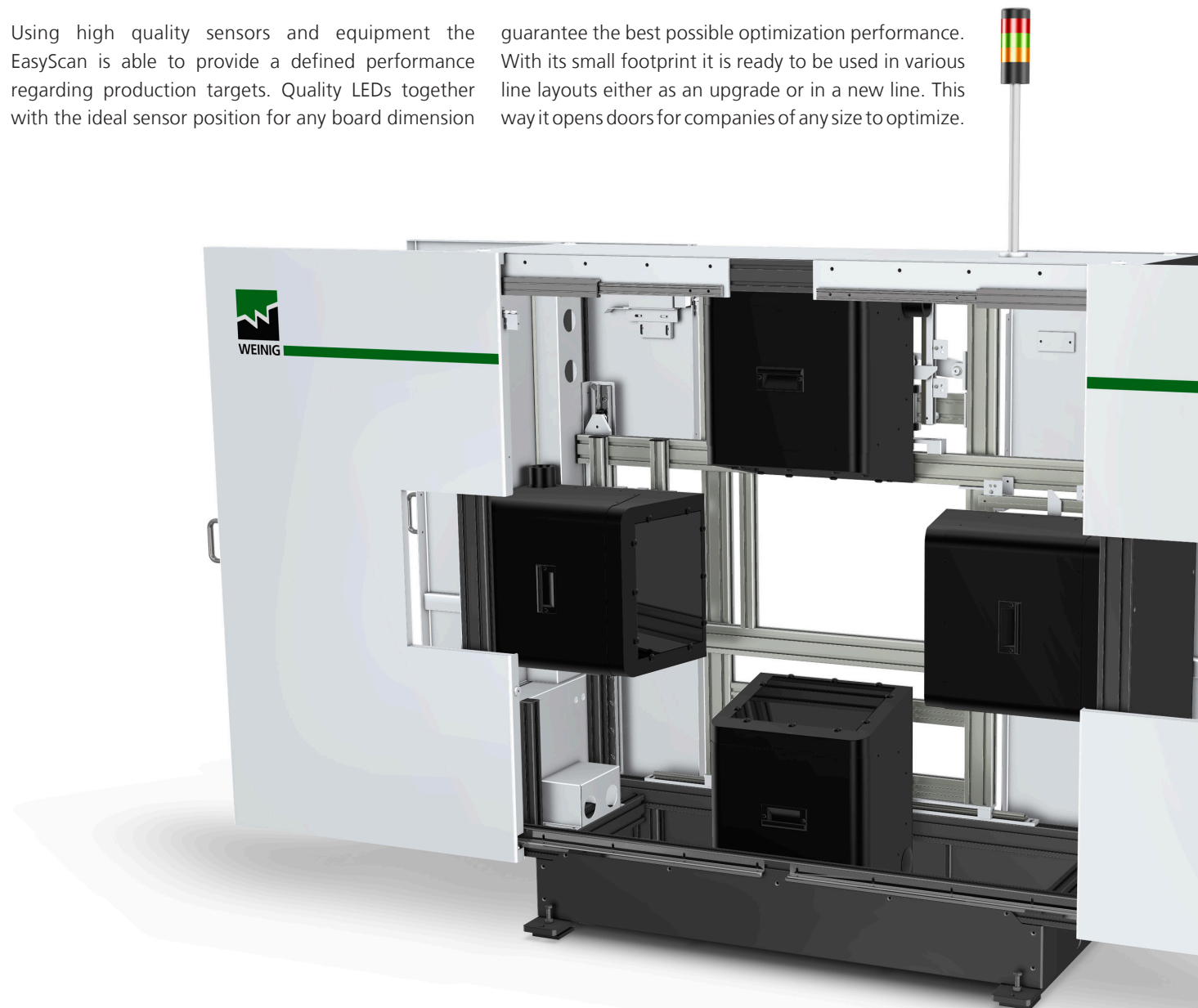
customer requirements. There are unlimited possibilities in the definition of products and qualities. By dividing the products into diverse zones complicated qualities can also be easily dealt with. Therefore multiple end products can be produced.



High quality components

Using high quality sensors and equipment the EasyScan is able to provide a defined performance regarding production targets. Quality LEDs together with the ideal sensor position for any board dimension

guarantee the best possible optimization performance. With its small footprint it is ready to be used in various line layouts either as an upgrade or in a new line. This way it opens doors for companies of any size to optimize.



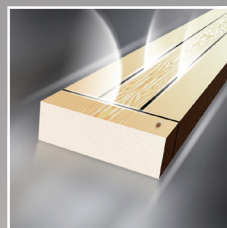


Applications



The C module for cross-cutting

The EasyScan C is specially set-up for cross cutting. It can be adapted to most demands through a range of options offering exceptional flexibility. Based on the tested cutting edge technology from LuxscanLine it can measurably improve your production.

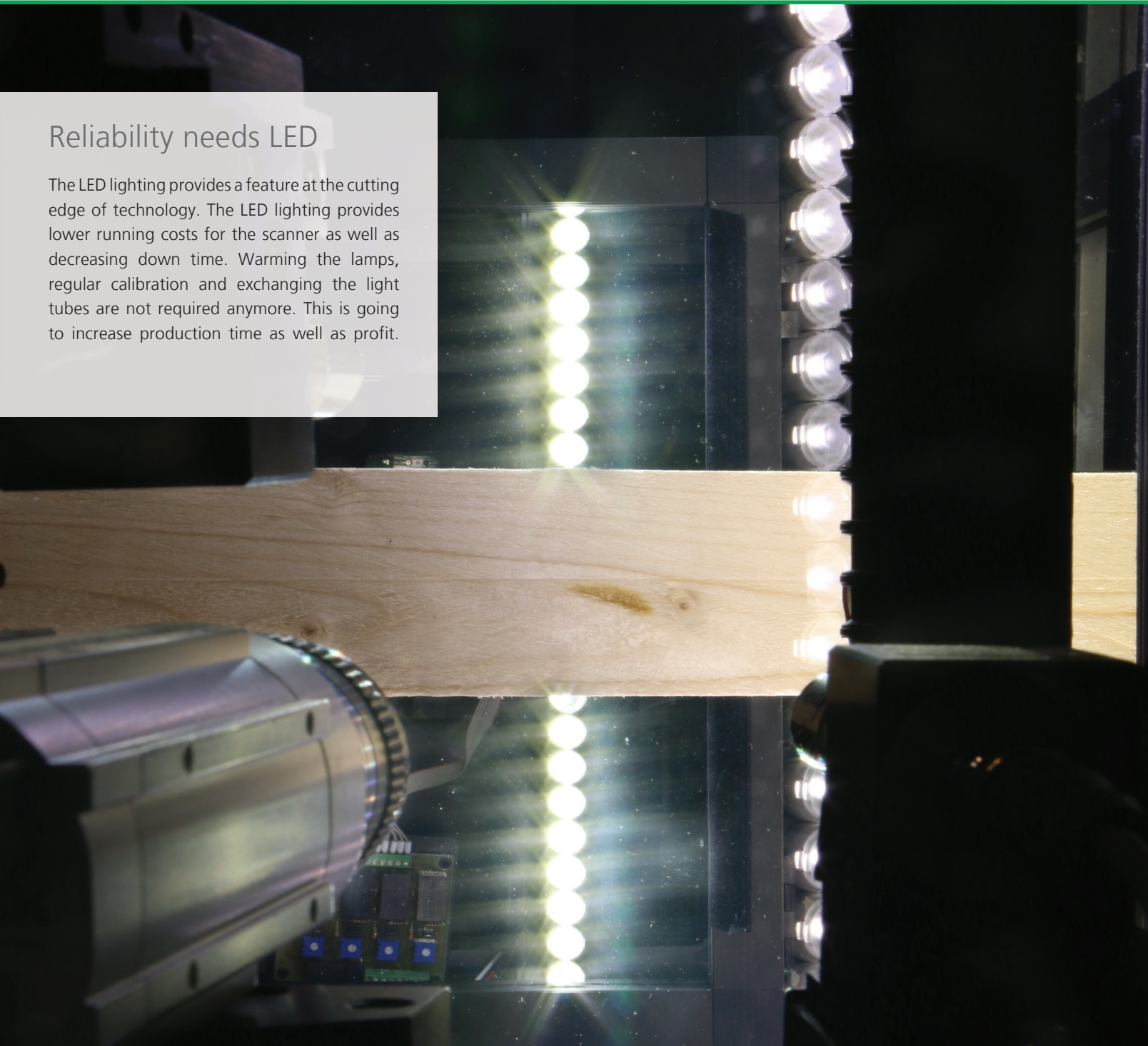


The R module for ripping

With its extended 2D optimizing software the EasyScan R is a valuable addition to your rip saw. With an optimization according to product, and not only to width, the ripping decision is improved considerably. The possibilities of this system are so high that no laser line width optimizer can compete.

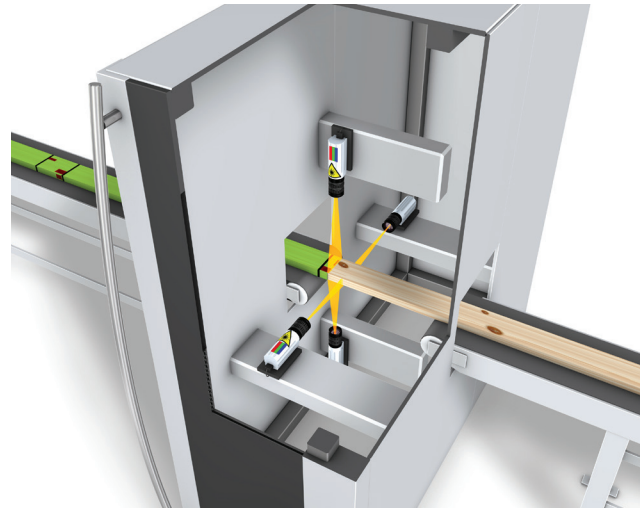
Reliability needs LED

The LED lighting provides a feature at the cutting edge of technology. The LED lighting provides lower running costs for the scanner as well as decreasing down time. Warming the lamps, regular calibration and exchanging the light tubes are not required anymore. This is going to increase production time as well as profit.



Laser cameras – the proven sensor technology

All our systems are fitted with laser cameras as standard equipment. With very high scan rates, the best detection and results are guaranteed. With continuous development in these industrial sensors the performance is continually improving. Using this technology it is possible to identify defects such as knots, pith cracks, etc. The 3D laser system also allows detection of 3D surface defects such as holes, wane and edge defects. The grain orientation is picked up by the dot laser, which is a major plus for finger joint products.



The color module

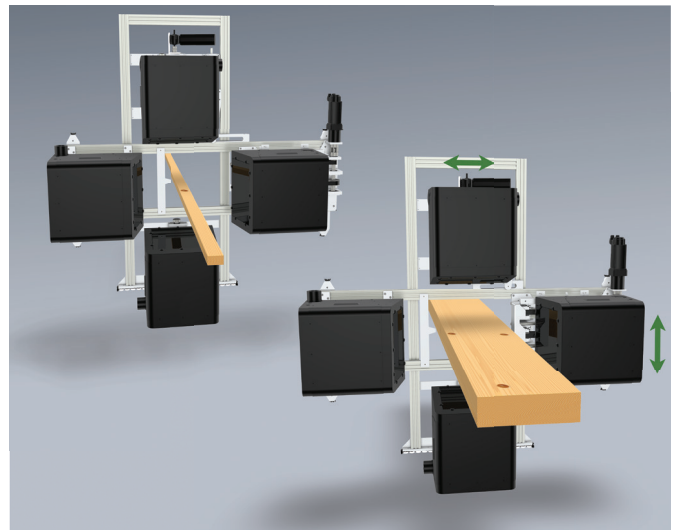
Standard scanners face serious issues as soon as it comes to accurately identifying color defects. Color defects are addressed by the new generation color module, which improves the detection of the scanner. A high resolution in both length and width measurement provides a high detection of color defects. Defects such as blue stain are identified with the highest accuracy. The color module is an option available depending on the application requirements.



Simple adjustment is the key

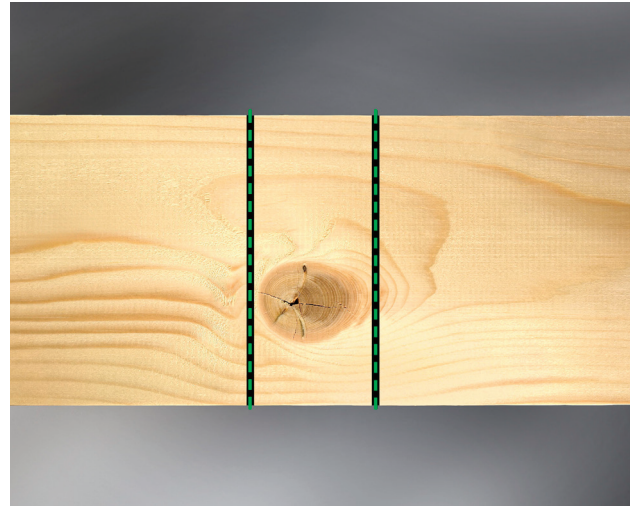
Following the "smart & simple" principle the EasyScan features a streamline design. Just like the well known CombiScan Series it comes with superior software, designed for simpler usage. Making adjustments and calibration as short as possible leads to increased production time and higher output. Even though the software has been simplified, the EasyScan still supplies a multitude of data to control your production.

Automatic adjustment of width as well as thickness limits mistakes and reduces the risk of production loss. In the meantime, the Cross Concept Construction (CCC) keeps the cameras in the ideal position for superior detection results.



Optimizing the simplest way

Within cross-cutting and ripping there is always optimization potential with regards to yield, quality, economy and profit maximization. The EasyScan takes a key role in this regard. Featuring various sensors, the EasyScan provides a cutlist for one cross-cut or rip saw. Taking into account customer information about products, qualities, scope, values, etc., it optimizes the timber to generate the largest benefits. Maximum increases in production and full capacity from connected machines leads to lower personal costs and a higher yield. Together with other machines from WEINIG you benefit from a valuable synergy.

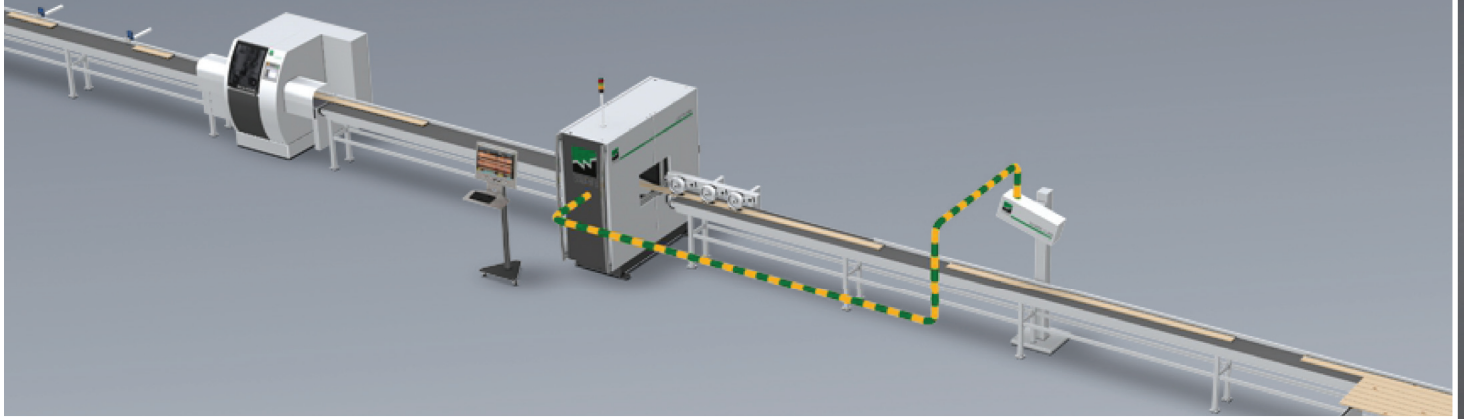


Profitable, board by board

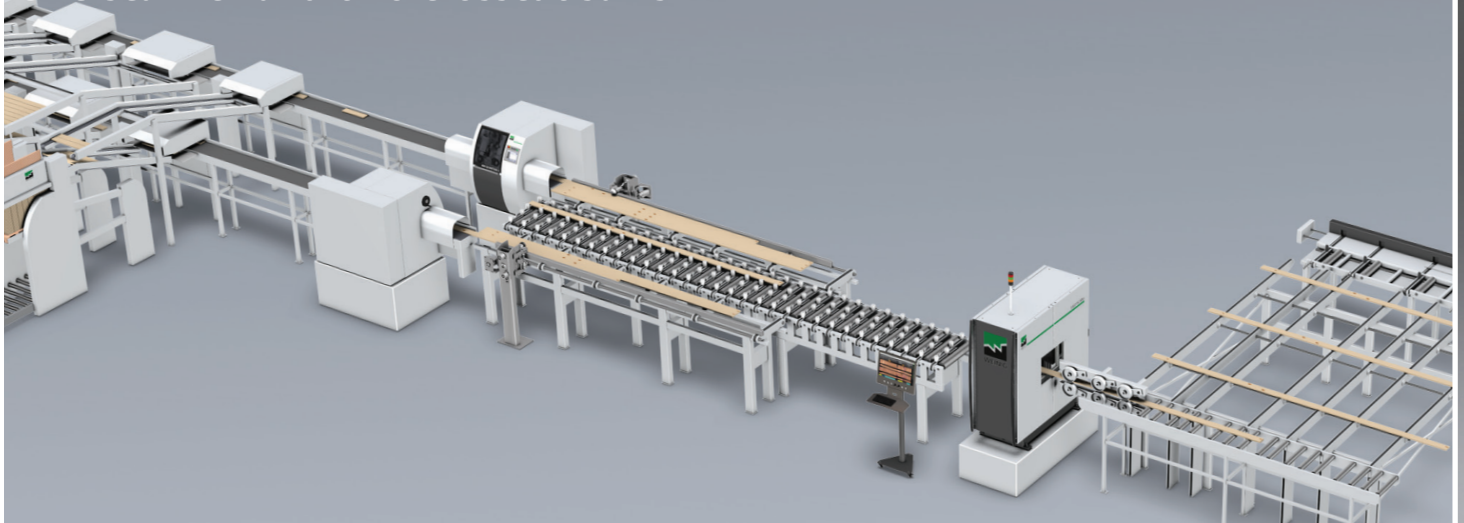
The EasyScan also allows the optimization of personal costs. The production is controlled at the push of a button and long training periods for new employees are a thing of the past. Taking into account the low investment costs, as well as its superior optimizing software, the EasyScan provides a fast return on investment.

Improved accuracy of cutting and better yield, especially for fix length production, makes the EasyScan a profitable and future proof investment.

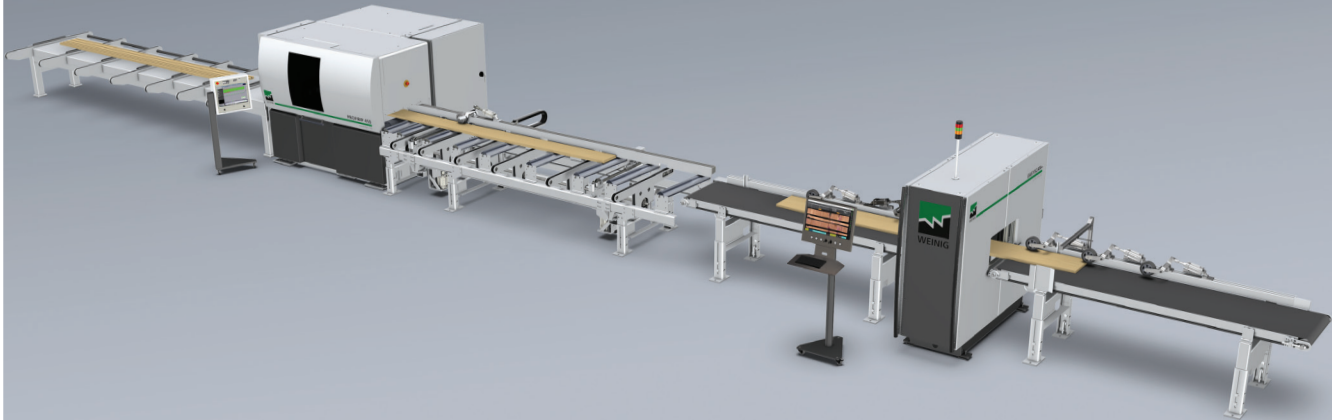
One scanner and one crosscut saw



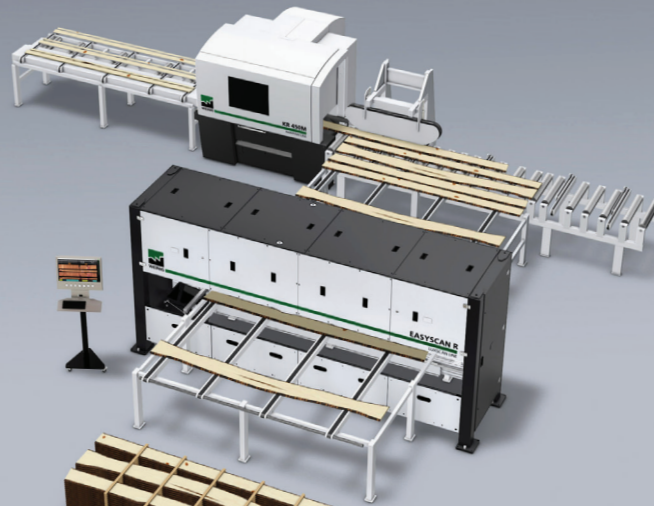
One scanner and two crosscut saws




One scanner and one rip saw



Also available as EasyScan RT for one rip saw





Powerful software based on CombiScan Series

Within cross-cutting and ripping there is always optimization potential with regard to yield, quality, automation, economy, and profit maximization. Scanners situated upstream in an automated production process take over a key role in the operation. At this point of the process powerful software is needed.

The EasyScan features software adapted from the proven CombiScan Series. Improvements in simplicity as well as usability strengthen the easy access to the system without weakening its optimization power.

As the EasyScan supports advanced optimization algorithms, it can be used in many different cross-cutting and rip applications.

		95,88	95,15	2,73
		0,00	0,00	0,00
		98,35	98,35	2,66
		69,17	69,17	57
		95,41	95,41	30
		100,00	100,00	263
		0,00	0,00	0
		0,00	0,00	0
		100,00	100,00	0
		0,00	0,00	0
		0,00	0,00	0
		0,00	0,00	0
		0,00	0,00	0
		0,00	0,00	0

Overview of the EasyScan specification:

The table shows the standard technical specifications. For further, more detailed information, according to your individual needs, please contact an expert from WEINIG.

Technical Data	EasyScan C	EasyScan R
Max. feed speed (m/min)	180 m/min	120 m/min
Max. pieces per minute	30	25
Length	1200 mm - 6500 mm	1200 mm - 6500 mm
Width	35 mm - 160 mm / 50 mm - 260 mm	100 mm - 450 mm
Random width	No	Yes
Thickness	15 mm - 100 mm	15 mm - 100 mm
Species	Softwood / Hardwood	Softwood / Hardwood
Working height	920 mm	920 mm
Options		
Laser cam	●	●
Dot laser	○	○
LED	●	●
Color	○	○
Automatic adjustment for dimensions	●	●
Touchscreen	●	●
Remote control	●	●

Technical changes possible. Statements and illustrations in this brochure include optional extras which are not included in the standard specifications. Covers sometimes removed for photographic purposes.

● Standard ○ Option

CombiScan Sense: Maximum performance and flexibility

The CombiScan Sense LuxscanLine series is the flagship of the WEINIG scanner range. Additional high end sensors in various combinations provide the perfect platform for all of today's high level production demands. The CombiScan Sense takes optimizing possibilities to a whole new level while providing maximum control and transparency in the production process.

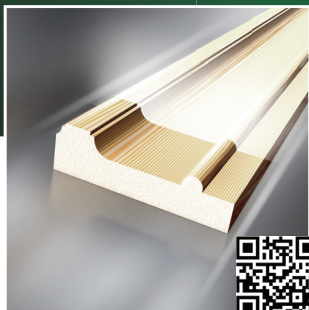


EasyScan+: High performance, low budget

The EasyScan+ LuxscanLine series has all the attributes of a hi-end scanner. It closes the gap between the entry level EasyScan and the hi-end CombiScan Sense. This innovative scanner has been developed from the successful CombiScan. It features high performance combined with reasonable pricing. With the EasyScan+ LuxscanLine hi-end optimizing becomes affordable for everyone.



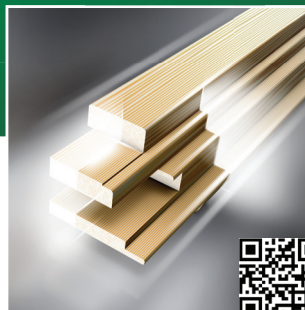
THINK WEINIG



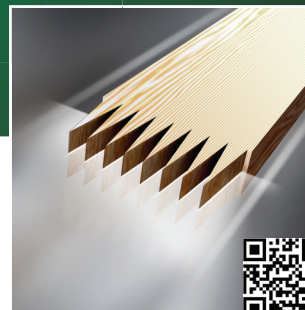
- S4S and profiling
- Automation
- Tool / grinding systems



- Ripping / cross cutting
- Scanner technology
- Optimization



- Windows and doors
- Furniture
- Surface sections



- Finger-jointing
- Tenoning
- Coping

Your WEINIG expert
www.weinig.com

WEINIG OFFERS MORE





Production:

LUXSCAN Technologies Sarl
12 Rue de l'Industrie
L-3895 Foetz
Luxembourg

Telefon +352 540 416
Telefax +352 540 417
info@luxscan.com
www.luxscan.com

Sales:

MICHAEL WEINIG AG
Weinigstraße 2/4
D-97941 Tauberbischofsheim
Germany

Telefon +49 93 41 / 86-0
Telefax +49 93 41 / 70 80
sales@weinig.com
www.weinig.com